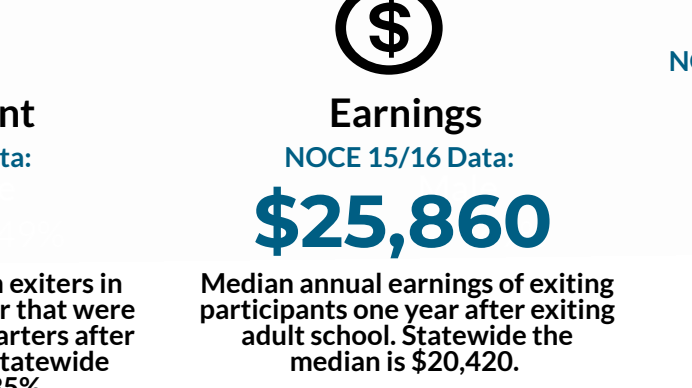
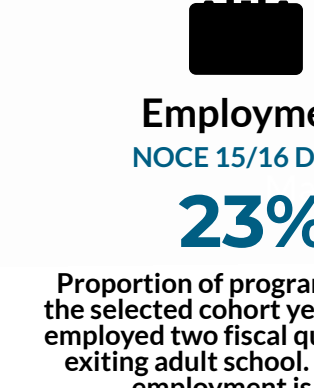
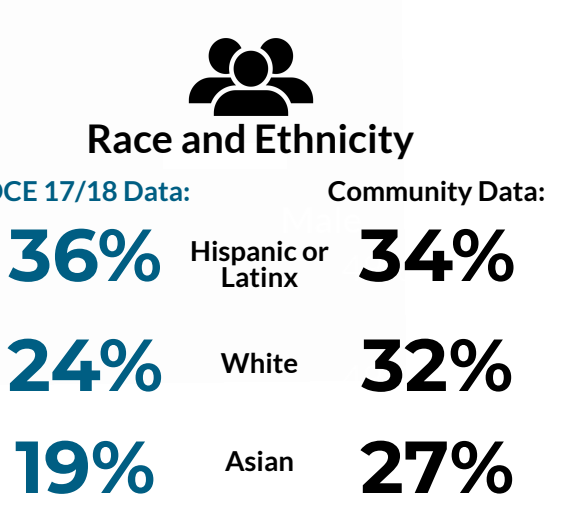


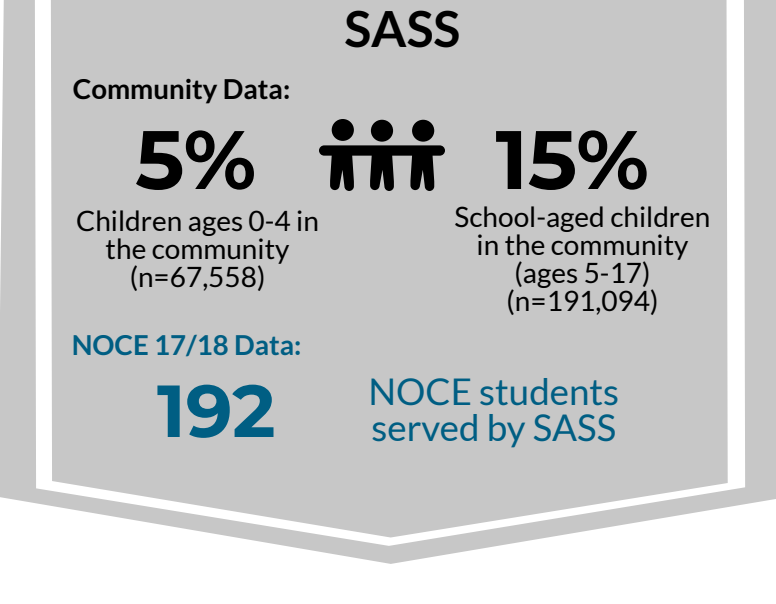
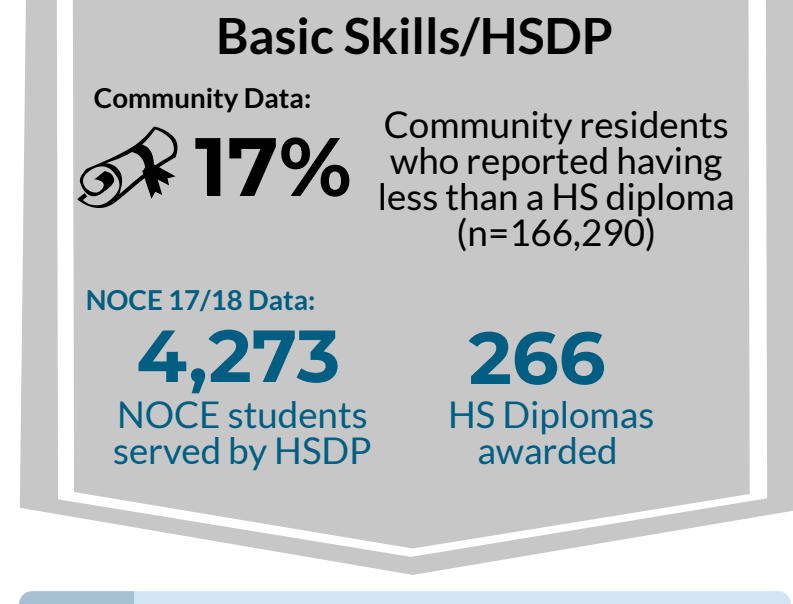
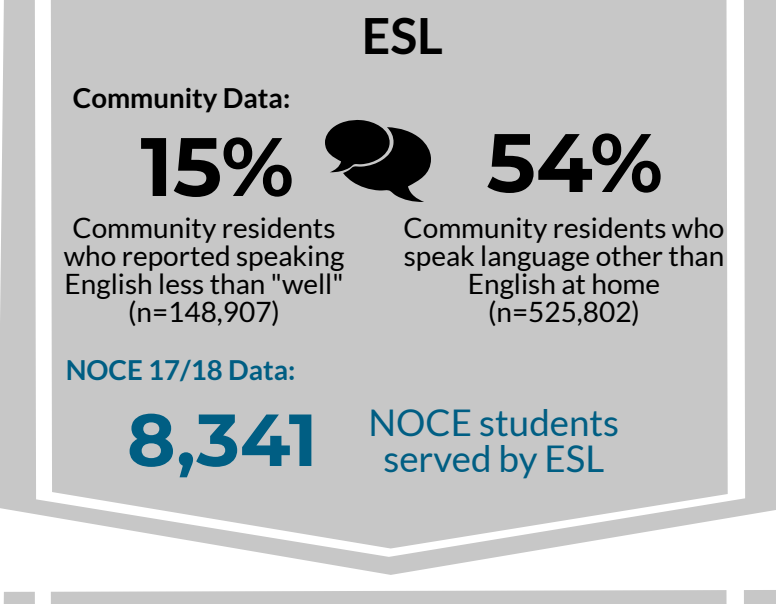
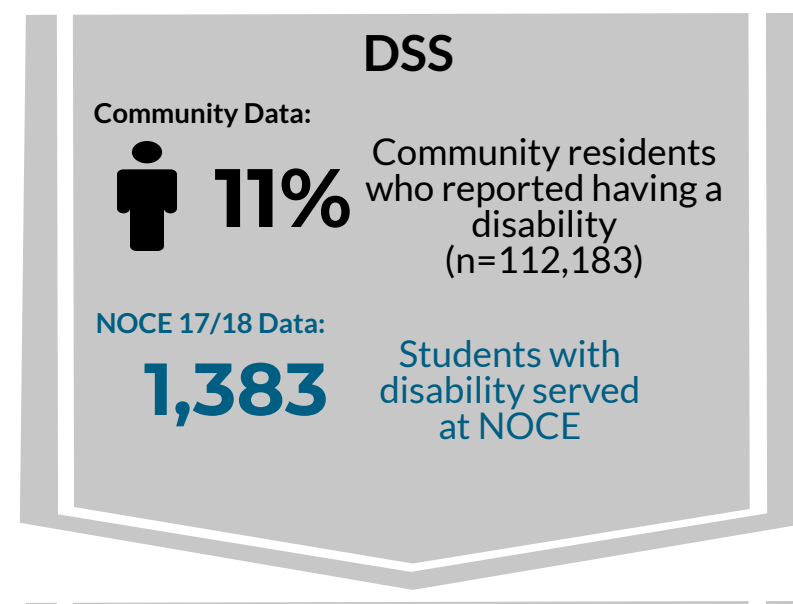
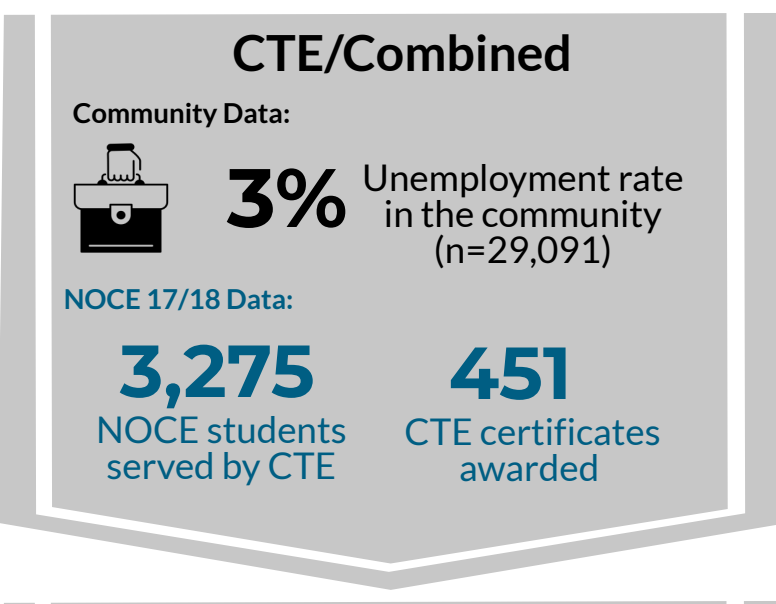
The community profile is based on the U.S. Census Bureau's 2017 American Community Survey (ACS) 1- Year Public Use Microdata Samples (PUMS) estimates.

Seven micro-regions encompassing 13 cities within the NOCCCD district boundaries were included:
 05906 - Yorba Linda, La Habra, & Brea Cities
 05907 - Fullerton & Placentia
 05908 - Buena Park, Cypress & Seal Beach (including La Palma and Los Alamitos)
 05909 - Anaheim City (West)
 05910 - Anaheim City (East)
 05912 - Westminster*, Stanton & Garden Grove (West)
 05913 - Garden Grove City (East)



Produced by: Office of Institutional Research and Planning

COMMUNITY DATA & CAEP STRATEGIES



Some Notes About the Data

- The community profile is based on only the adult sample (18 years and older) within the community.
- The PUMS micro-regions created by the Census Bureau do not match one-to-one with NOCCCD district boundaries. The community profile is a close approximation of the community NOCRC serves.
- Not all data related to CAEP strategies' outcomes is reflected through NOCE data since not everything is captured within NOCE's student information system.

Produced by: Office of Institutional Research and Planning

CAEP Outcome Goals

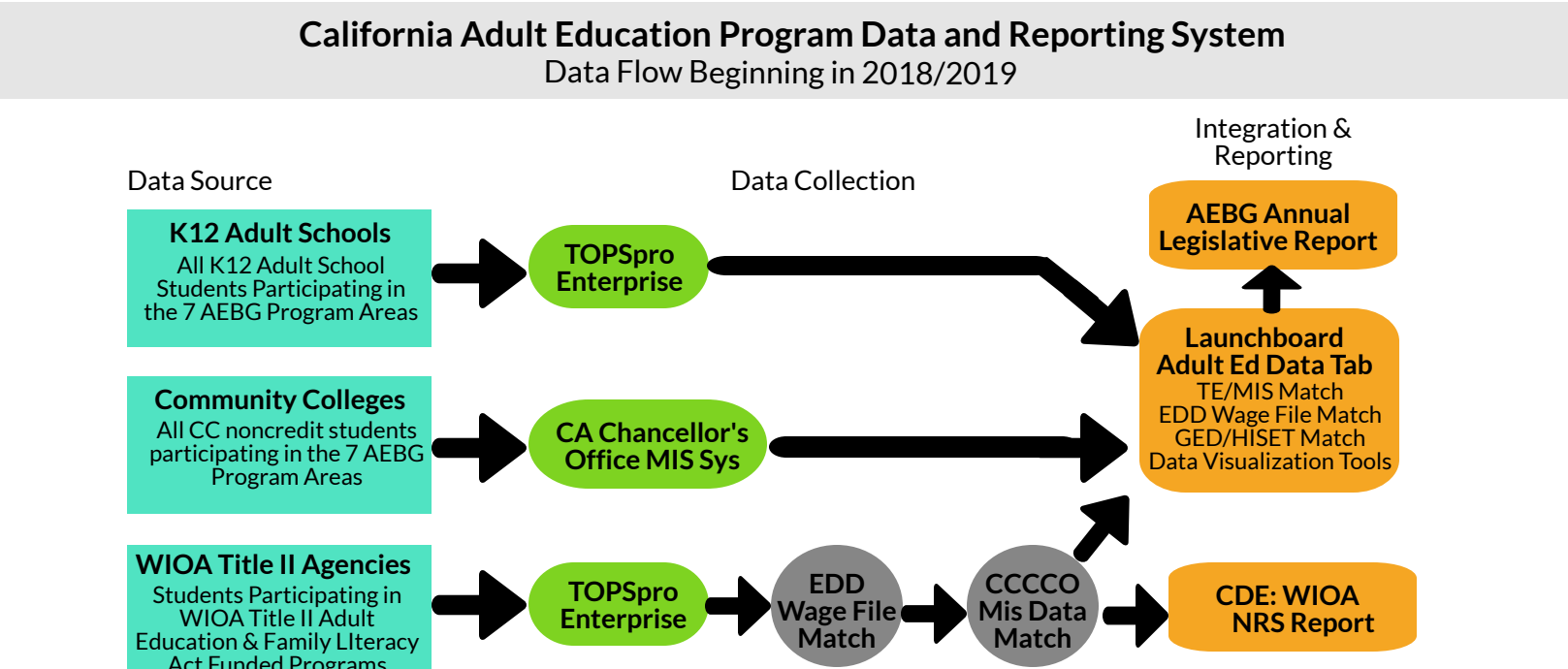
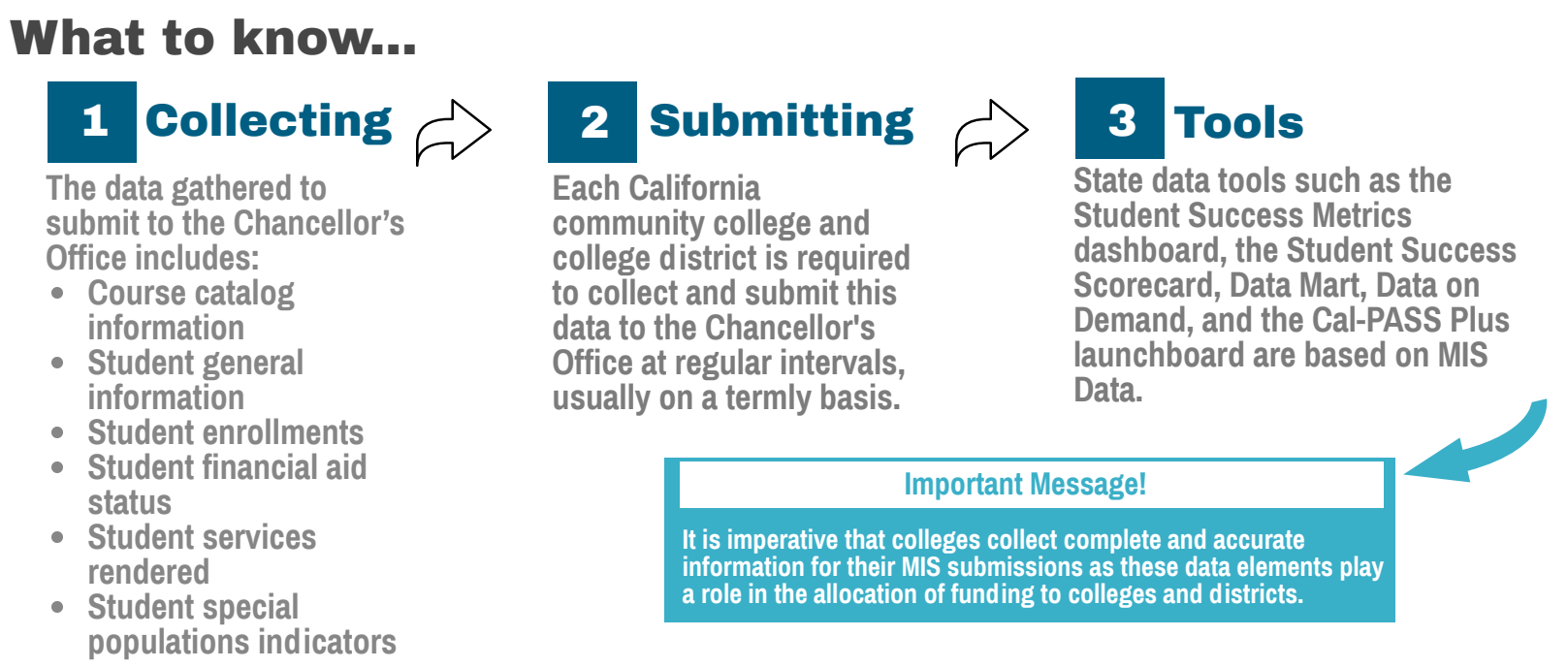
The data gathered from students served by NOCRC will assist the California Community Colleges Chancellor's Office, administrators, and program staff in tracking participants' progress in attaining the following outcome goals:

- Adults Served**
Adults served by members of the consortium will be disaggregated into three categories:
 - Service only students.
 - Students receiving 1-11 instructional contact hours in any of the seven program areas.
 - Participants who received 12 or more instruction contact hours over a single program year in any of the seven program areas.
- Progress**
Adults served by members of the consortium who have demonstrated the following measure of progress:
 - Improve literacy and basic skills: includes completion of a course in ABE, ASE, or ESL for levels below transfer or CDCP certificate in basic skills or ESL.
 - Transition to a new program: From ABE to ASE or from ESL to ASE or from ABE/ESL/ASE to CTE.
- Completion**
Adults served by members of the consortium who have demonstrated the following measure of completion:
 - Completion of high school diplomas or recognized equivalents.
 - Completion of postsecondary certificates, degrees, or training programs: CDCP CTE certificates (48+ hrs), locally approved certificates eligible for inclusion on the Eligible Training Provider List (ETPL), any credit college award, certificate, degree that is not developmental.
- Placement into Jobs**
Adults served by members of the consortium who have demonstrated the following measure:
 - Employment after two or four quarters post exit.
- Improved Wages**
Adults served by members of the consortium who have demonstrated the following measure:
 - Wage gain four quarters after exit.
 - Median wage attainment two quarters after exit.
 - Attainment of a living wage.
- Transition to Postsecondary**
Adults served by members of the consortium who have demonstrated the following measure of completion:
 - Transition to noncredit or credit CTE program.
 - Transition to credit courses that are not developmental.

Produced by: Office of Institutional Research and Planning

MIS Report

The California Community Colleges Chancellor's Office Management Information System (MIS) unit collects data from all of the California community colleges and districts.



- ### Next Steps for NOCRC
- 01 Build Internal Capacity through Data Trainings**
 - Develop a CAEP data collection manual for reference.
 - Hold internal data trainings for NOCRC.
 - Develop a platform to share lessons learned around data collection efforts and processes.
 - 02 Assure Data Captured Aligns with CAEP Goals**
 - Develop collection tools that capture needed data.
 - Ensure data collected is as complete as possible.
 - Streamline NOCRC data collection processes.
 - 03 Utilize Data to Inform Decision Making**
 - Confirm Chancellor's Office Tools (Launchboard & Student Success Metrics) reflect local data.
 - Disseminate findings across consortium partners.

Produced by: Office of Institutional Research and Planning